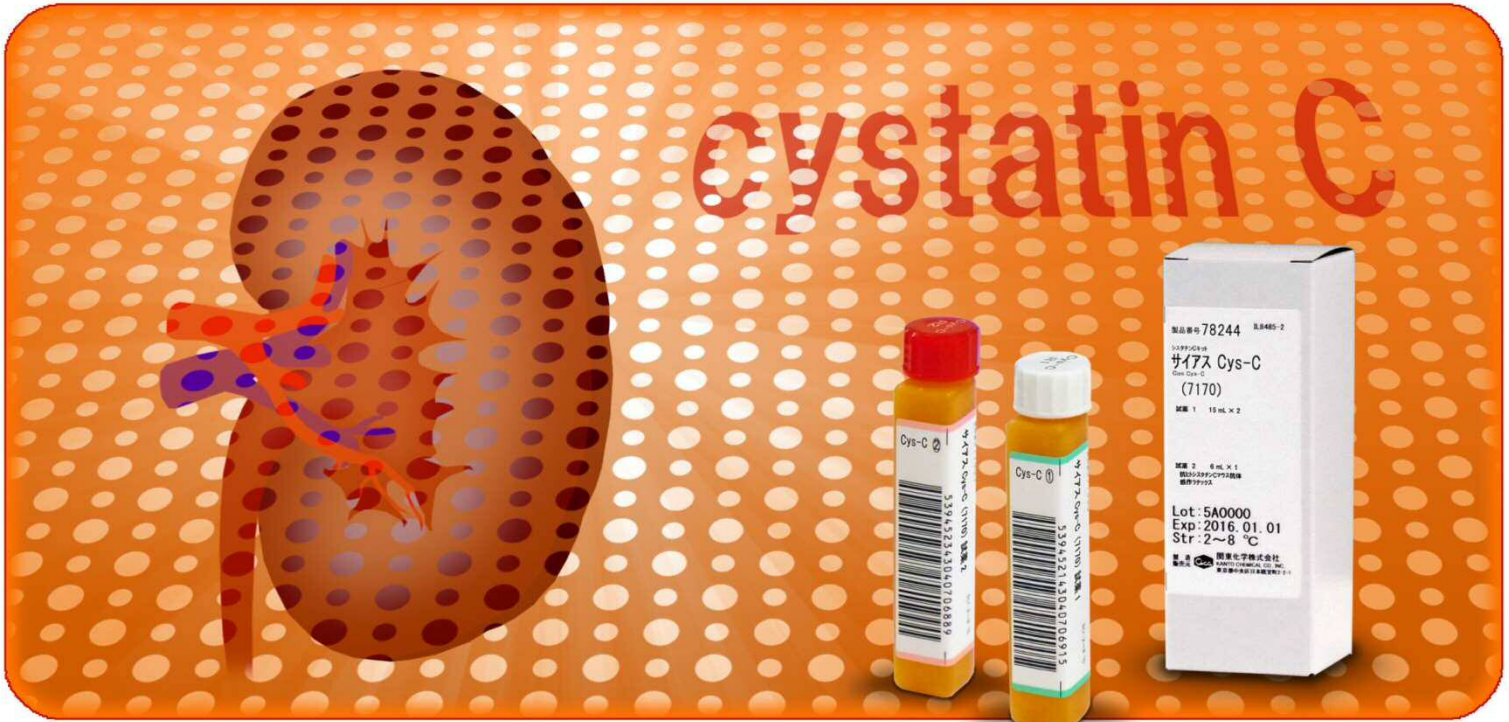


Cias Cys-C



Characteristics

- Latex turbidimetric immunoassay
- Detects the decrease in the GFR earlier than UN or CRE

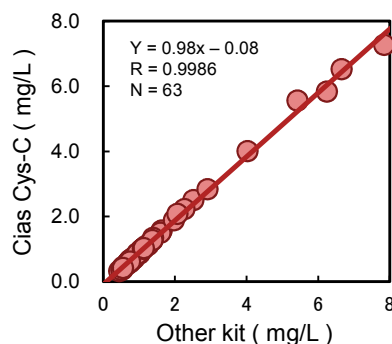
Type	Code	Name	Package	Storage	Expiry
Reagent	78244	Cias Cys-C (7170)	Reagent 1: 15 mL×2 Reagent 2: 6 mL ×1	2 - 8°C 2 - 8°C	1 year
Calibrator	78245	Cys-C Calibrator	1 mL×1 ×6 conc.	2 - 8°C	1 year
Control	78246	Qualitrol Cys-C	1 mL×3 ×2 conc.	2 - 8°C	1 year

Precision

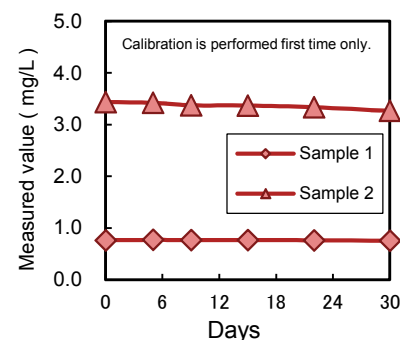
Sample	1	2
N	20	20
Mean	0.755	3.004
Max	0.79	3.04
Min	0.74	2.97
Range	0.05	0.07
S.D.	0.01	0.02
C.V.(%)	1.42	0.66

Unit: mg/L

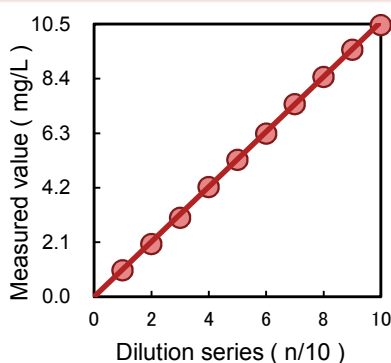
Correlation



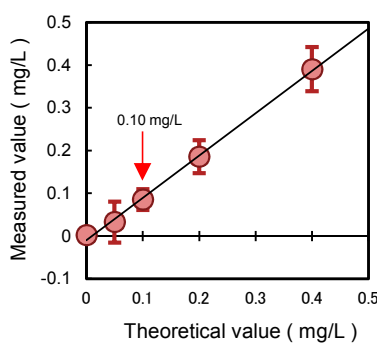
Open stability



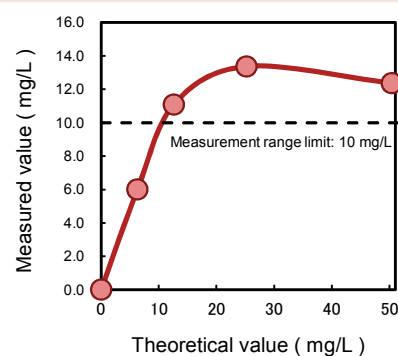
Linearity



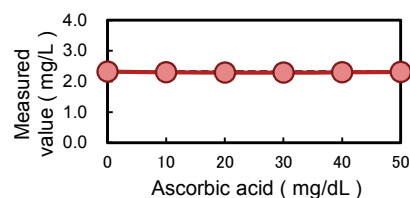
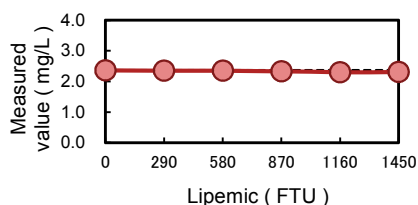
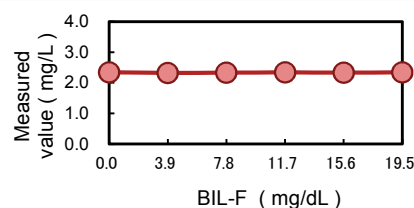
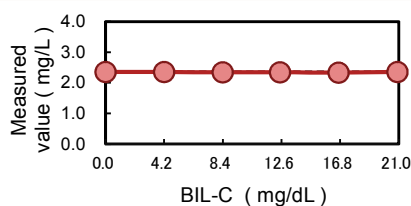
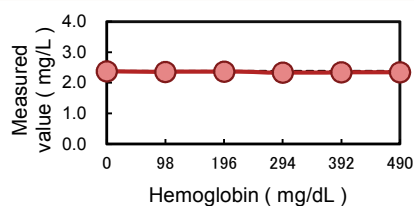
Limit of detection



Zone phenomenon



The influence of coexisting substances



Kanto Chemical Co., Inc.
International Business Department
Reagent Division

East Muromachi Mitsui BLDG, 2-1, Nihonbashi Muromachi 2-chome,
Chuo-ku, Tokyo, 103-0022 JAPAN

TEL +81-3-6214-1092 FAX +81-3-3241-1053

« HP: <http://www.kanto.co.jp> E-mail: kanto-61@gms.kanto.co.jp »