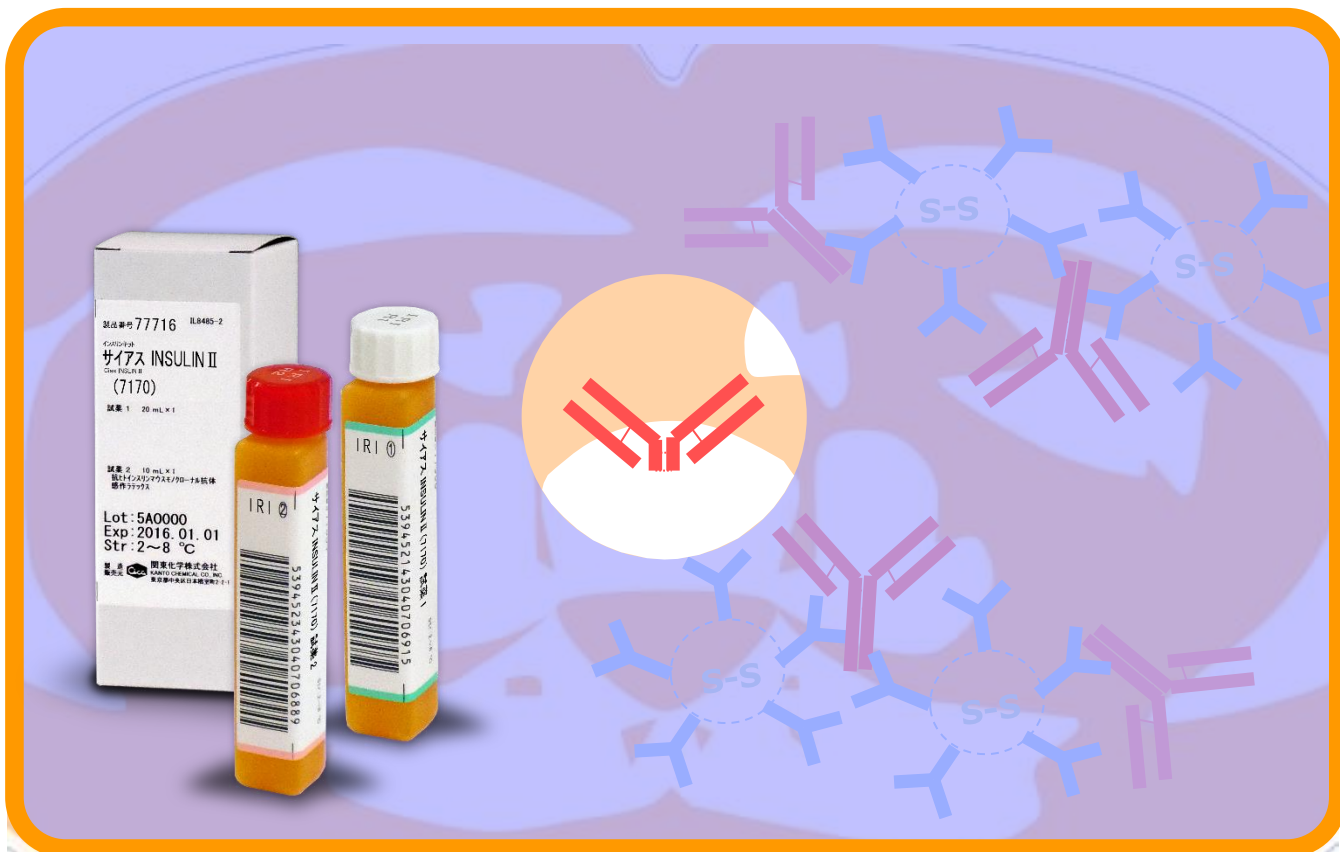


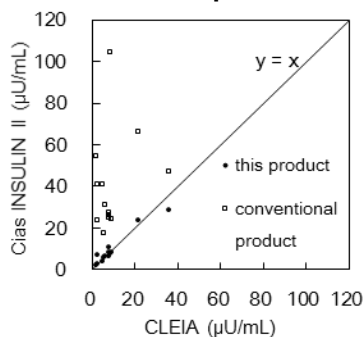
# Cias INSULIN II



## Characteristics

- It is applicable to various automatic analyzer.
- It can be measured by NaF plasma.
- It is a high specific reagent using Fab of the anti-human insulin mouse monoclonal antibody.

**Abnormal reaction sample with conventional products**

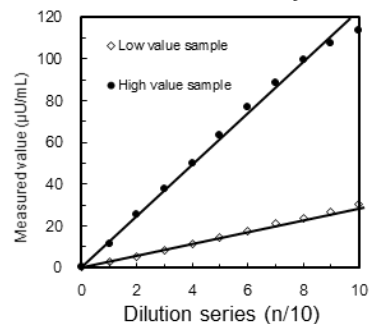


**Within-run precision**

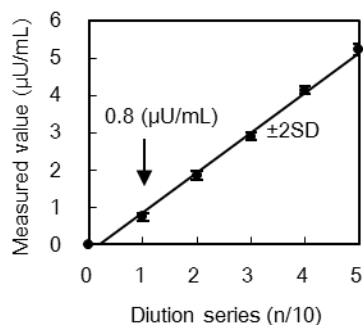
Sample	1	2	3
N	20	20	20
Ave	1.88	6.21	19.92
Max	2.1	6.5	21.0
Min	1.7	5.9	19.1
Range	0.4	0.6	1.9
SD	0.086	0.191	0.494
CV %	4.6	3.1	2.5

(Unit : µU/mL)

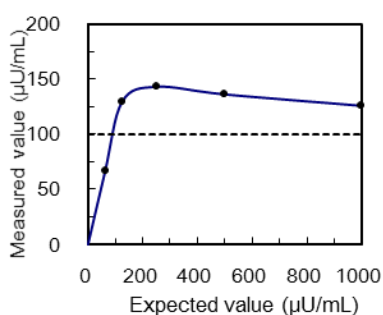
**Dilution linearity**



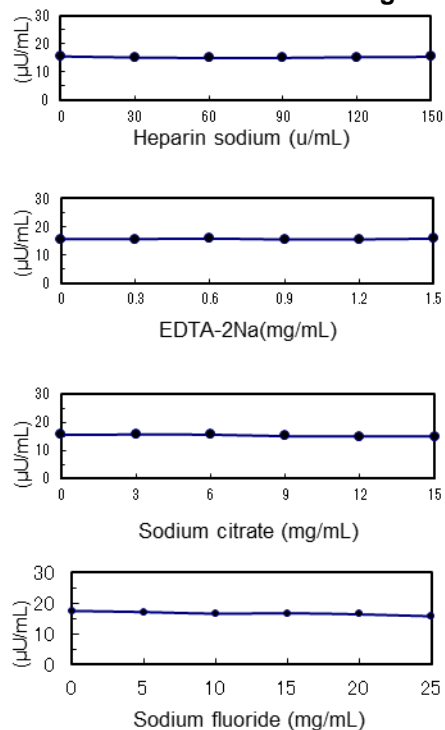
**Limit of detection**



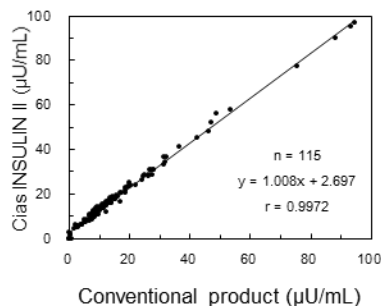
**Zone phenomenon**



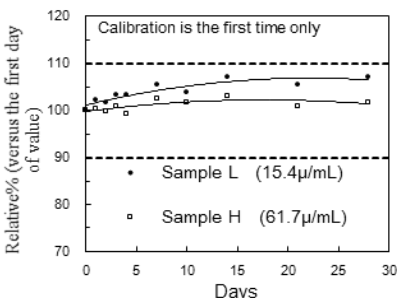
**The influence of the anti-coagulant**



**Correlation**



**Open stability**



**Product List**

Code	Name	Type	Reagent	Package	Storage	Expiry
77716	CIAS INSULIN II	7170	Reagent 1	20 mL × 1	2 - 8°C	1 Year
			Reagent 2	10 mL × 1		
77699	INSULIN Standard solution		1.0 mL × 1 × 6conc.			
77700	Qualitrol INSULIN		1.0 mL × 3 × 2conc.			