

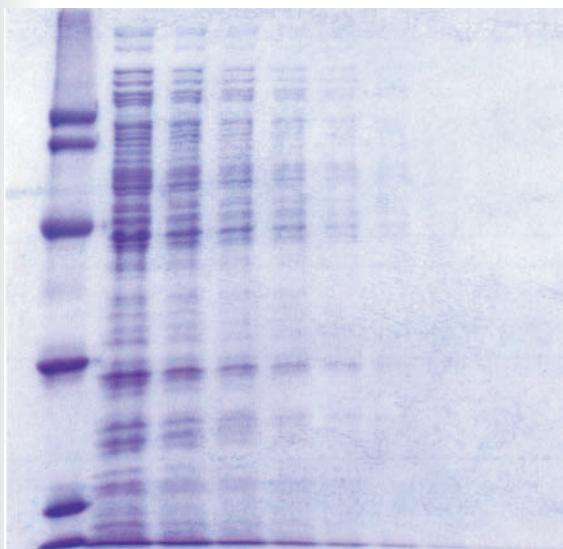
CBB Staining Kit for electrophoresis

Rapid CBB KANTO



Kanto Reagents

You can quickly detect proteins after electrophoresis !



① ② ③ ④ ⑤ ⑥ ⑦ ⑧ ⑨ ⑩

Sample :

①.....Protein Standard Mixture IV (MERCK)
range: 12.3kD-78.0kD

②~⑩.....Lysis Solution
(*Halobacterium cutirubrum*)

Sample Volume :

②.....8 μ g as total amount of protein

③~⑩.....Diluted twice consecutively from lane②

Electrophoresis :

SDS-PAGE 12%gel (Laemmli)

Coomassie Brilliant Blue R-250 (CBB R-250) has been widely used for protein staining after gel electrophoresis.

The CBB method, however, takes a long time for complete de-staining.

"Rapid CBB KANTO" is a new type of gel staining kit for polyacrylamide slab gel electrophoresis to overcome the disadvantage of CBB method and achieve the faster detection of proteins.

Advantages

- The whole process of staining and de-staining after electrophoresis can be accomplished within 50 minutes.
- Approximately 30ng of a protein can be detected.
- Staining solution can be readily prepared by mixing the equal volume of Reagent A and B.



Kanto Kagaku

Formulation for Reagent

The following protocol is to prepare the staining solution for a 70 x 80 x 1 mm polyacrylamid slab gel.

Please adjust the solution volume according to the gel size.

1. Formulation for staining solution (50ml)
Mix Reagent A 25ml and Reagent B 25ml.
2. Formulation for de-staining solution (100ml)
Add acetic acid 10ml and methanol 15 ml into purified water (de-ionized water or distilled water) 75 ml, and mix well.

Operation

1. Put the staining solution in a container.
Soak the gel after electrophoresis into the solution and shake it gently for 10 minutes.
2. Put the de-staining solution in another container.
Soak the gel after staining into the solution and shake it gently for 20 minutes.
3. Discard the de-staining solution and pour purified water.
4. Soak the gel into water and shake gently for more than 20 minutes.

Product

| Cat. No. | Name | Size |
|----------|-----------------|---------|
| 36535-96 | Rapid CBB KANTO | 1 kit |
| | (Reagent A | 500ml) |
| | Reagent B | 500ml) |



関東化学株式会社

試薬事業本部 試薬部

103-0023 東京都中央区日本橋本町3丁目11番5号 (03) 3663-7631
541-0048 大阪市中央区瓦町2丁目5番1号 (06) 6222-2796
812-0007 福岡市博多区東比恵2丁目22番3号 (092) 414-9361

<< <http://www.kanto.co.jp> e-mail: reag-info@gms.kanto.co.jp >>